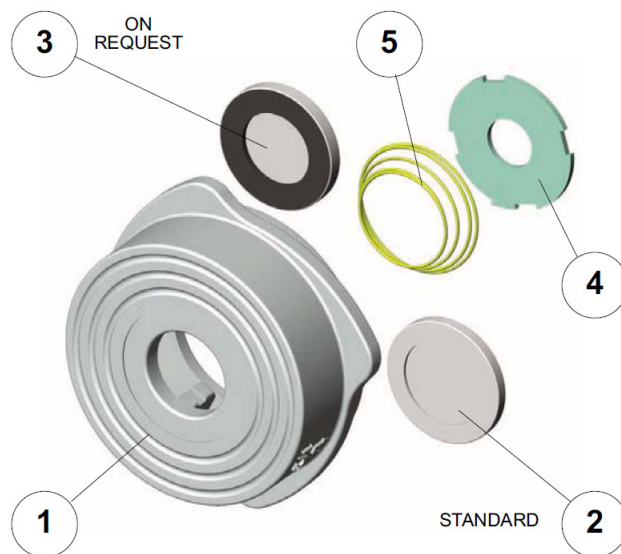


CHECK VALVES

KRG-D-W-XC/M

Disc check valve Model GB 015

DN15-100



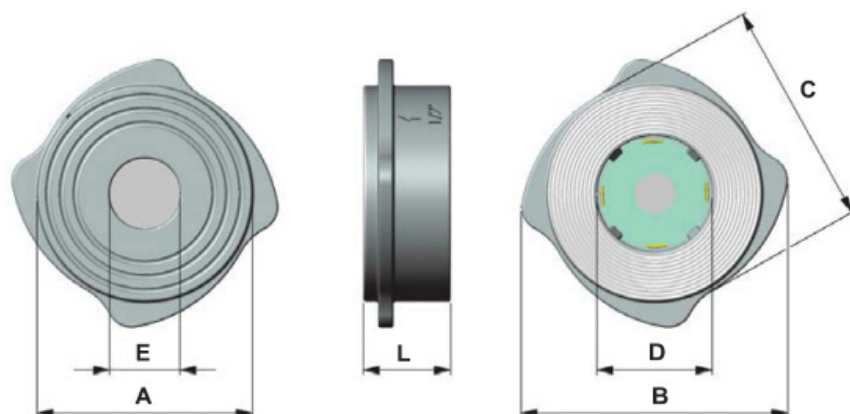
DN15-80 PN 6-40, ANSI150-300
 DN100 PN 10-40, ANSI150-300

- » Face to face according to DIN EN558-1 serie 49 (DIN3202 K4)
- » Can be installed in any position, also with downwards flow
- » Usable also as vacuum breaker, overpressure or bottom valve
- » No leakage with soft seat
- » With metal to metal seats according to DIN3230 BN3

Other sizes and materials upo request

PARTS

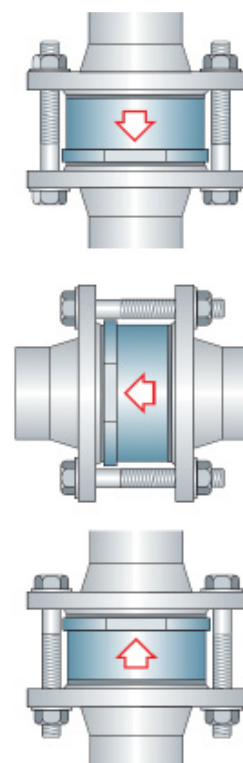
No.	Part	Material
1	Body	AISI 316
2	Metal seat disc	AISI 316 L
3	Soft seat disc (option)	AISI 316 L + NBR, EPDM, FKM
4	Spring top ring	AISI 316 L
5	Spring	AISI 316



DIMENSIONS AND WEIGHTS

DN	A	B	C	D	E	L	kg
15	43	54	45	23	14	17	0,1
20	48	64	54	28	19	20	0,2
25	58	71	63	36	25	22	0,3
32	68	81	72	50	31	28	0,4
40	75	93	82	58	38	32	0,6
50	94	110	65	71	48	40	1,0
65	113	130	115	86	62	46	1,5
80	129	149	131	105	77	50	2,0
100	159	181	160	130	95	60	3,2

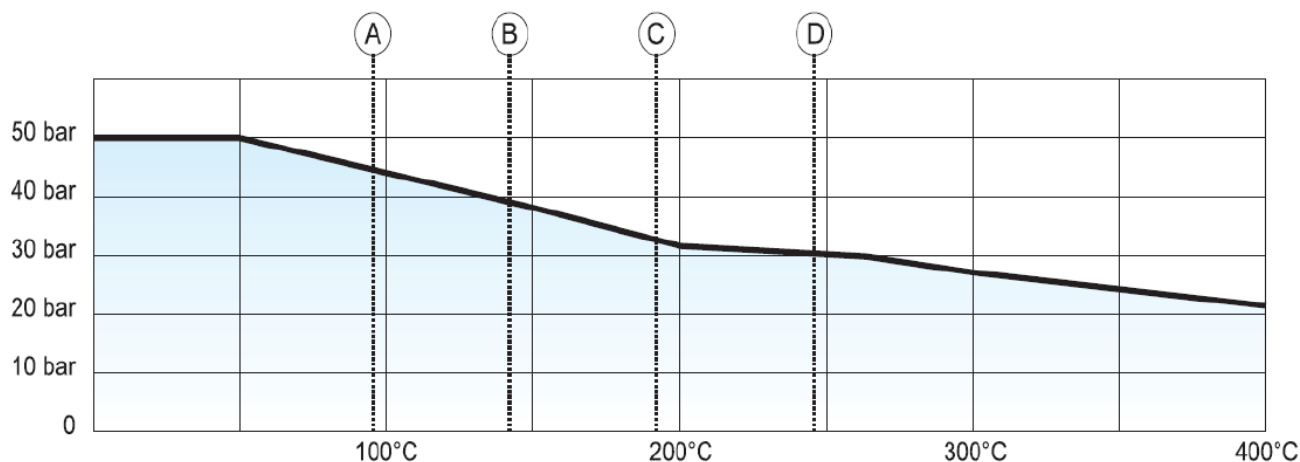
Can be installed in any position



CHECK VALVES

KRG-D-W-XC/M

Disc chekc valve, between flanges
DN15-100



- (A) NBR seal - Tmax = 95°C
- (B) EPDM seal - Tmax = 130°C
- (C) FKM seal - Tmax = 180°C
- (D) AISI 316 spring - Tmax = 240°C

MINIMUM OPENING PRESSURE

Flow		DN	15	20	25	32	40	50	65	80	100
▲	With spring	mbar	25	25	25	27	28	30	30	25	21
▶	With spring	mbar	23	23	23	25	23	24	24	19	15
▼	With spring	mbar	21	21	21	22	18	18	18	13	9

Head losses (H₂O - 20°C - horizontal flow)

